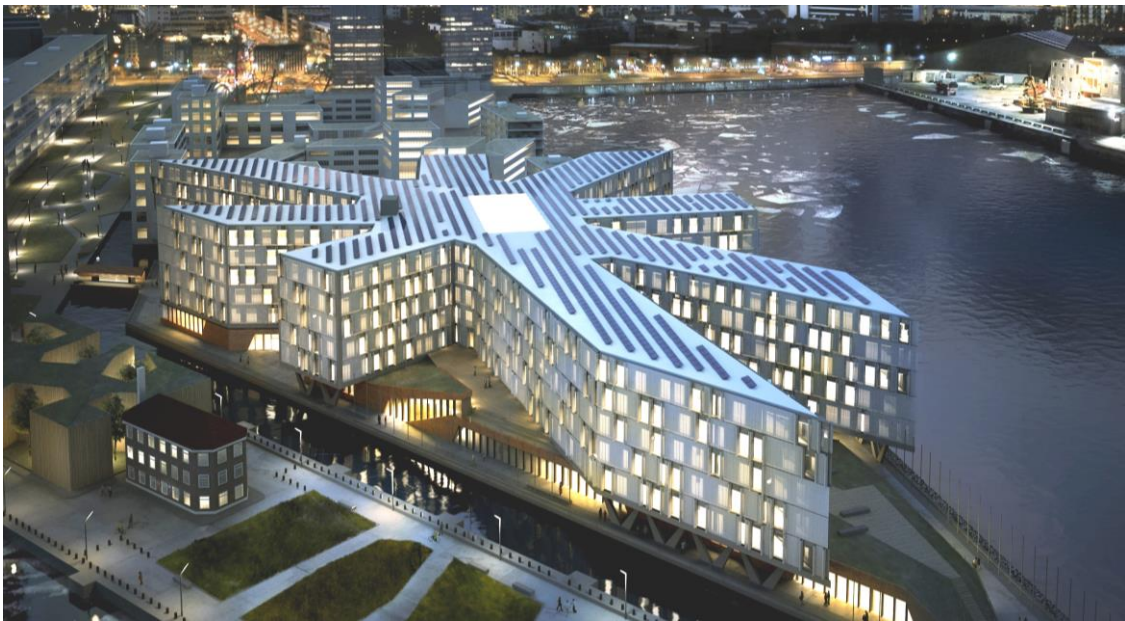


INFORMATION FOR VISITORS AND PARTICIPANTS TO  
**THE CLIMATE TECHNOLOGY CENTRE & NETWORK**



**UN CITY COPENHAGEN**  
UN City Marmorvej 51, 2100 Copenhagen, Denmark  
[www.ctc-n.org](http://www.ctc-n.org)

---

## Our Address

Climate Technology Centre & Network  
UN City  
Marmorvej 51  
2100 Copenhagen  
Denmark

## Contact us at

Tel: +45 4533 5372  
Email: [ctcn@unep.org](mailto:ctcn@unep.org)  
UN Security: +45 4533 5112  
UN City Reception: +45 4533 5000  
Emergency Services: 112

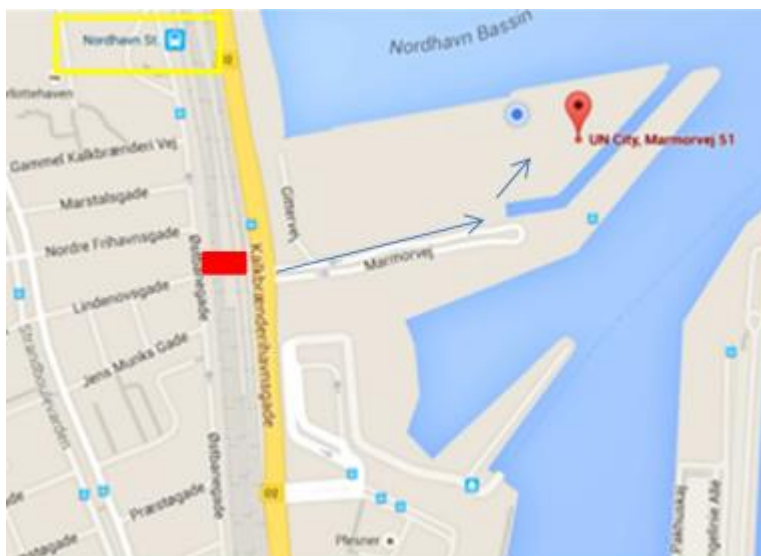
## Transport

### BY TAXI

A taxi ride from the airport to the city centre and UN CITY costs around 350/400 DKK. Taxis are available just outside Terminal 3. Tel: +45 7025 2525 or +45 3535 3535.

### BY TRAIN

At the airport, purchase a ticket using the machines, a single three-zone train ticket costs approximately 36 DKK/7USD. Take the Metro to Nørreport Station (around 15/20 minutes), transfer to the “S-tog” train lines: A, B or C exit at Nordhavn Station (5-8 minutes from Nørreport Station).



**WALKING FROM NORDHAVN STATION TO UN CITY** The underpass from Nordhavn Station, marked red on the map, brings you to a pedestrian crossing. directly ahead is UN City (FN Byen in Danish) approximately a 5-minute walk. Note there is a small detour on Marmorvej due to construction, so please take care to follow the signs.

## WELCOME TO UN CITY

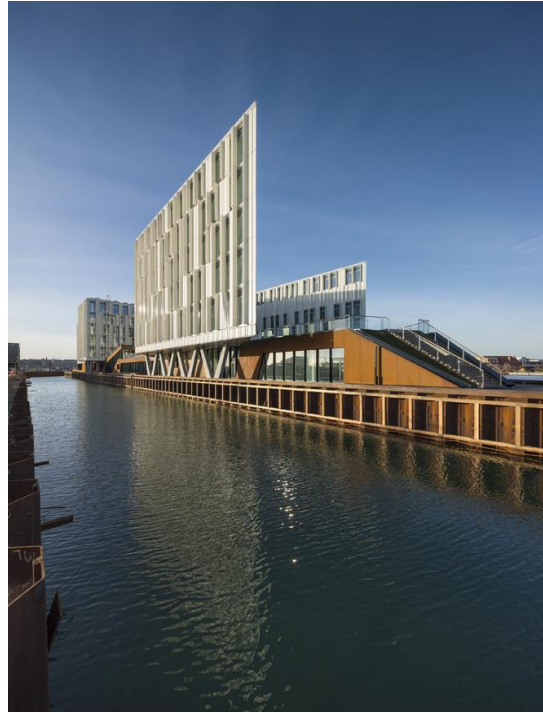
### Arriving at our Office

Please make sure to arrive at least 40 minutes before the beginning of the meeting at UN City to ensure a smooth start, as security clearance may take up to 20 minutes.

You will be asked to show identification at the security gate, please bring your **passport** or **government-issued ID**.

On the first day of the meeting, we will set up a registration desk near to the UN City Reception, a staff member will meet you at the registration desk 30 minutes before the meeting starts.

You will be issued a visitor badge, which you are asked to wear for the duration of your visit. We will then direct you to the meeting room, [Auditorium 3](#)



### Coffee/Tea

Coffee breaks will be included in the event. However, if you would like additional hot drinks, coffee/tea machines are available in the main reception area, as well as in the coffee shop. For the cost of 25 DKK, you may purchase coffee, cappuccino, espresso or latte. Major credit cards are only accepted as payment at the coffee shop, no cash.

### Breakfast & Lunch

There is a coffee shop on the main floor of the building, which serves breakfast between 8:00 - 10:00 a.m. Lunch is served in the canteen between 11:30 a.m. and 13:30 pm. Lunch includes a buffet with vegetarian choices, salad bar, sandwiches and soup. Cash, as well major credit cards are accepted as payment at the canteen.

### Internet Access

Login details for wireless access during your stay at the UN City:

Network name: UN-City-Guest

Username: guest

Password: uncity2013

## INFORMATION FOR YOUR STAY IN COPENHAGEN

### Banking

The Danish currency (DKK) is the krone (crown). Denmark does not participate in the single European currency (EURO) however some major shops will accept payment in EURO. The banks are open from 10:00 to 16:00 Monday to Friday, and most banks have cash dispensers at street level. All major credit cards are accepted (be sure to have the PIN code). The most common credit card in Denmark is the Visa card. **There is also an ATM located in the UN City Reception area which dispenses Danish Kroner and Euros.**

### Hotels

Copenhagen: <http://www.hotels-in-denmark.dk/booking-map-hotels-copenhagen.asp>

Adina Apartment Hotel  
Amerika Plads 7  
2100 Copenhagen  
Tel: +45 3969 1000  
[acph@adina.eu](mailto:acph@adina.eu)  
[www.adina.eu](http://www.adina.eu)

Wakeup Copenhagen  
Borgergade 9  
1300 Copenhagen  
Tel: +45 4480 0090  
[book@arp-hansen.dk](mailto:book@arp-hansen.dk)  
[www.wakeupcopenhagen.dk](http://www.wakeupcopenhagen.dk)

Hotel Opera  
Tordenskjoldsgade 15  
1055 Copenhagen  
Tel: +45 3347 8300  
[book@arp-hansen.dk](mailto:book@arp-hansen.dk)  
[www.hotelopera.dk](http://www.hotelopera.dk)

\*Please note that participants are responsible for making their own hotel reservations.

### Find out more

- Copenhagen Airport : <http://www.cph.dk/en/>
- Tourist Information: <http://www.visitcopenhagen.com/copenhagen-tourist>
- The Copenhagen Post, Danish News in English: <http://cphpost.dk/>
- Weather in Copenhagen: <http://www.dmi.dk/en/vejr/til-lands/regionaludsigten/>
- Journey Planner for Copenhagen and surrounding areas: <http://www.rejseplanen.dk/>
- Bus, train and Metro guide: <http://www.moviatrafik.dk/dinreise/Tourist/Documents/BusTogMetroguide-web.pdf>
- The Copenhagen Diplomatic List, (containing all diplomatic missions in Copenhagen): <http://um.dk/en/about-us/the-protocol-department/>

### CTCN 13<sup>th</sup> Advisory Board information on-line:

<https://www.ctc-n.org/calendar/events/13th-ctcn-advisory-board-meeting>