



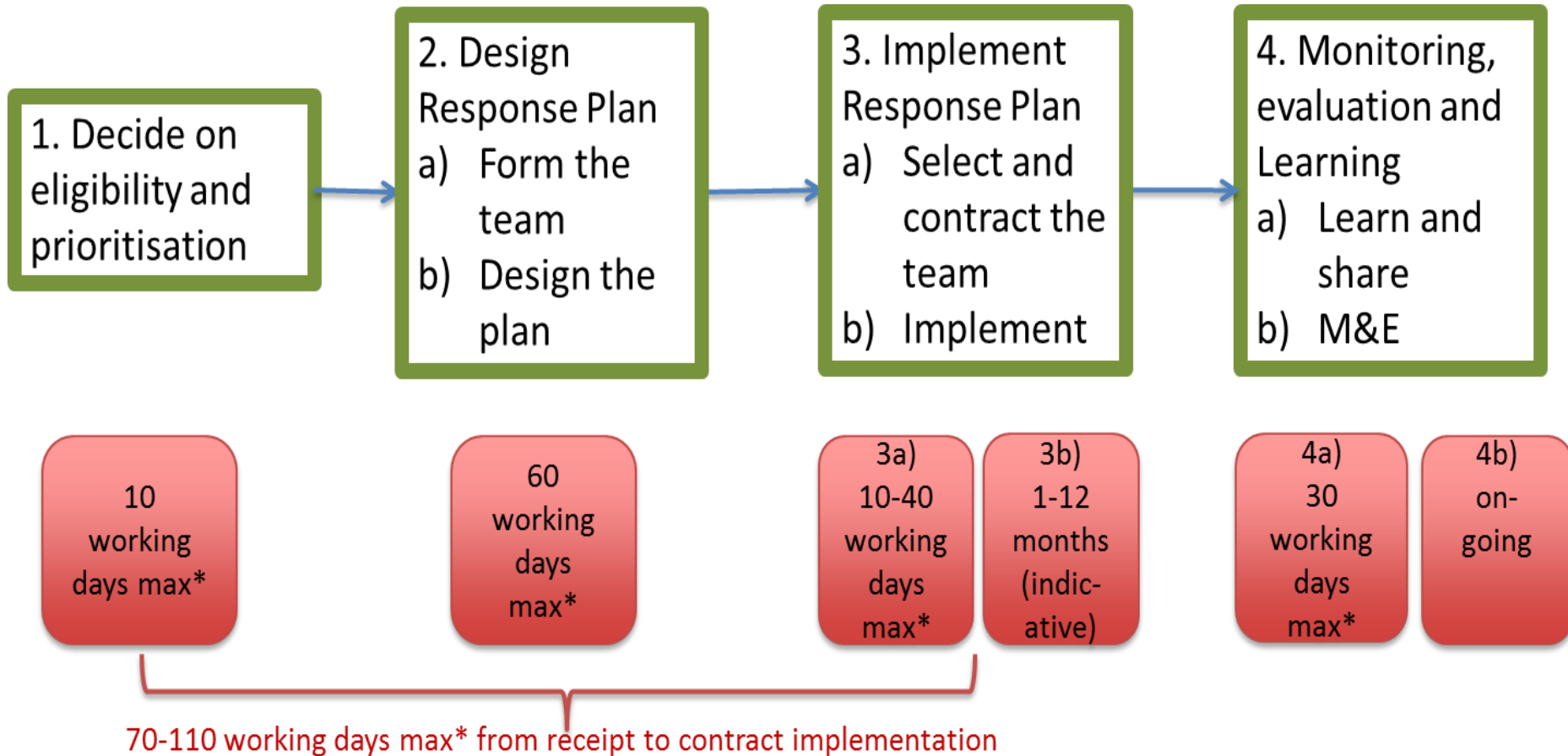
## 7. Technical Assistance:

- a) Process and Criteria
- b) Monitoring and Evaluation
- c) Emerging issues

6<sup>th</sup> Advisory Board Meeting



# Technical Assistance: Process



\*Assuming CTCN full staffing and resourcing as per AB approved workplan, not including stoppages due to national circumstances.

# Technical Assistance: Criteria

## **Eligibility criteria:**

1. A) The support will contribute to increased resilience and/or mitigate emissions; and  
B) The request is in line with national strategies and plans.
2. The support will enhance endogenous capacities.
3. Processes are in place in requesting country to monitor and evaluate.

## **Prioritisation criteria:**

1. Promote endogenous and appropriate technologies and processes.
2. “Project readiness” and potential for replication or scaling up.
3. Promote collaboration amongst and between stakeholders, including between countries, and having elements of South–South, bilateral, or multilateral cooperation.
4. Promote multi-country approaches and the regional bundling of requests
5. Leverage public and/or private financing.
6. Promote and demonstrate multiple benefits, as well as social, economic benefits, and environmental sustainability.
7. Promote and demonstrate gender equality and empowerment of vulnerable groups, including women and youth.

## **Balancing principles:**

1. Inter and intra-regional equity, with a preference for requests submitted by LDCs and other highly vulnerable and low capacity countries
2. A balance of technological-related activities covering both adaptation and mitigation
3. A balance of technological related activities spanning the technology cycle.

# TA in practice: Colombia Waste Management



## Request (Stage 1):

- Reformed waste management regulation
- Technologies for avoiding landfilling
- Establish pilot plant and foster private investment

Response  
Plan by  
Bariloche  
Fdn and  
GiZ (Stage  
2A)

## Design Response Plan (Stage 2B):

1. Feasibility of technology for the pilot plant in Cali
2. Design institutional, commercial and management structures
3. Business model

Selection of  
Implementer  
through  
competitive  
bidding  
(Stage 3A):

## Implementation (Stage 3B):

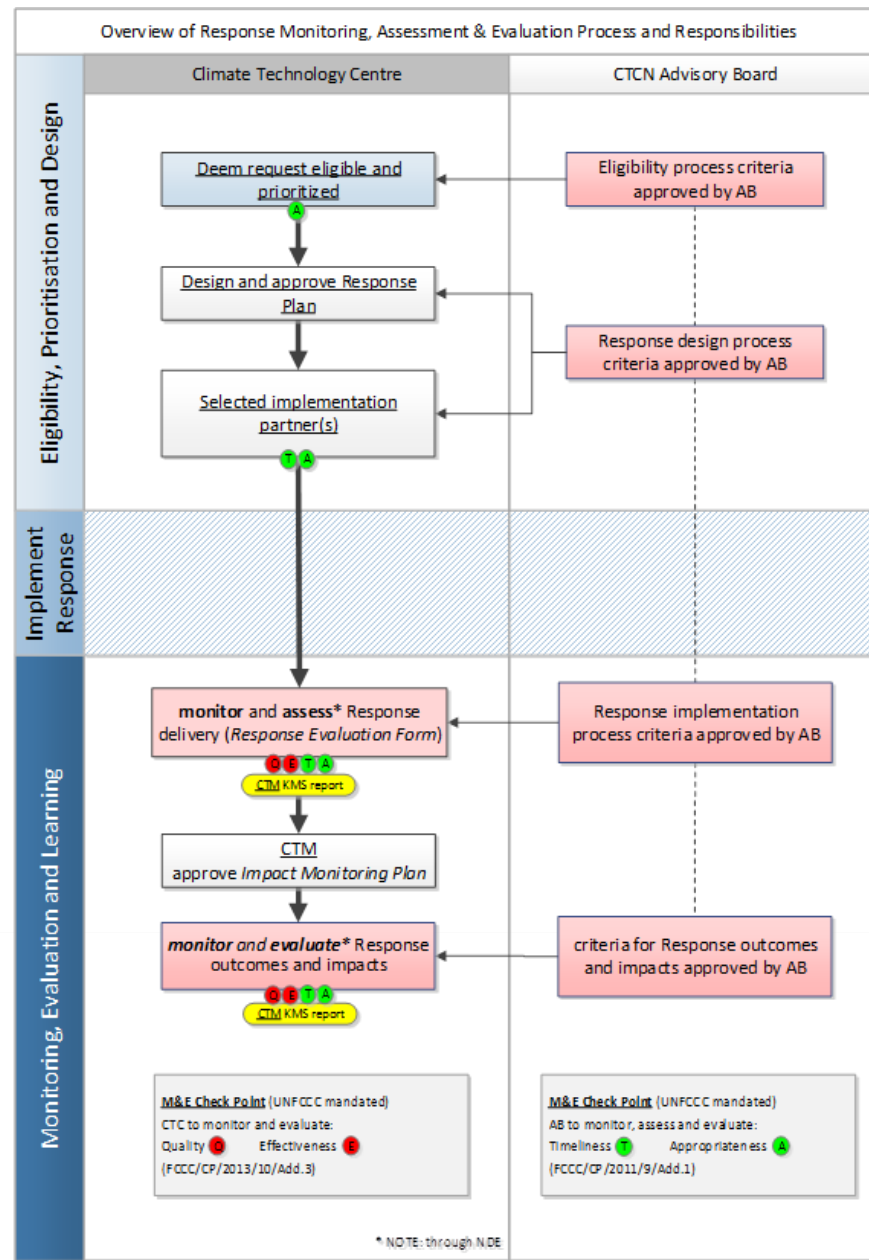
- Implementation by ISWA
- National and local institutions active (including waste pickers)
- Includes investment facilitation (expression of interest by CAF)

## Learning and sharing (Stage 4):

- Validation methods of technology selections
- Business model design
- Investment strategies scaled up nationally and shared globally

# M&E: Components

- **Timeliness**
  - Intervention(s) at the right moment
  - activities undertaken within predetermined timeframe
- **Appropriateness**
  - Alignment with the eligibility, prioritisation and balancing criteria
  - Relevance of the Response Plan
  - Quality and effectiveness of implementation



# M&E: Monitoring, Reporting and Verification

## Frequency

- **Continuous**
  - Technical Assistance Dashboard colour coding
  - Technical Assistance Dashboard flagging system
- **Periodically**
  - System review every 6 months through a Performance report

## Corrective Actions

- **Continuous**
  - Provision of additional resources or re-allocation of response dossiers within CTC;
  - Reallocation of contract responsibilities to other Consortium Partners and/or Network Members;
  - Response dossier put on hold pending further follow up by the appropriate NDE.
- **Periodically**
  - Route cause analyses of Technical Assistance Request with recommendation for consideration of Director to enhance technical assistance process & procedures

# M&E: Indicators (see full document for details)

Stage of Technical Assistance	Verification	Confirmation
1. Decide eligibility and prioritisation	<b>Eligibility, prioritization and balancing criteria</b> <u>Tool used:</u> CTCN Request Review Template	✓ CTCN Director
2. Design Response Plan	<b>A) Form the Design Team</b> <b>Appropriateness, quality and effectiveness</b> <u>Tool used:</u> Criteria for selecting Response Planning Team members <u>Indicators:</u> <ul style="list-style-type: none"> <li>• Relevant technical expertise</li> <li>• Experience/ engagement in national context</li> <li>• Relevant language capacity</li> <li>• Response Planning track record</li> <li>• Representative use of CPs in Response Planning</li> </ul>	✓ CTCN Director
	<b>B) Design the Plan</b> <b>Appropriateness; quality; effectiveness</b> <u>Tool used:</u> Technical Assistance Response Plan <u>Indicators:</u> <ul style="list-style-type: none"> <li>• Impacts related to climate change</li> <li>• Impact on SDGs</li> <li>• Stakeholder engagement</li> <li>• Synergies with existing projects</li> <li>• Gender considerations/ co-benefits</li> <li>• NDE feedback questions</li> </ul>	✓ CTCN Director ✓ NDE

# Emerging Issue #1: Implementation with (and by) National actors

## Original hypothesis:

NDE submits a CTCN request to obtain international technical assistance to access knowledge that is not available domestically

## Emerging action:

- A number of request proponents have expressed preference for having the technical assistance delivered by a domestic institution, at least partially
- In some cases, there is capacity available in the country filing the request
- Existing COP guidance:
  - *Enhancing cooperation with national, regional and international technology centres and relevant national institutions [1/CP.16]*
  - *The request enhances endogenous capacities [Eligibility criteria]*
- Red line (NDE not allowed to implement on behalf of CTCN)



# Emerging Issue #2:

## Catalysing financing for diffusion and scale-up

### **Challenge:**

Increasing demand for CTCN services such as business planning, investment readiness assessment, financing forums and match-making, deal facilitation, etc.

### **Emerging action:**

- Increased capacity in Network to offer such services and link with other financing actors (e.g. PFAN, Frankfurt School, Gaia Consulting, Kenya Climate Innovation Centre, LEDS Global Partnership, Climate Finance Laboratory)
- Improving strategic partnerships with financial institutions (especially regional development banks) and CTI PFAN for private sector.
- Piloting the model (especially GEF grant) on selected CTCN requests (e.g. Mali, Namibia, Vietnam, Dominican Republic, Colombia, Chile, Uganda, Senegal)