

KIRDI AS NDE: LESSONS LEARNT

**KENYA INDUSTRIAL RESEARCH AND DEVELOPMENT INSTITUTE
KIRDI P.O. Box 30065-00100. Nairobi. Kenya.**

**Willis B. Makokha (MSc Energy, CCSD)
HOD, Energy Division - KIRDI**

**Presentation for the Regional Forum for National Designated Entities
Anglophone Africa
24th – 26th June, 2015
Ngurdoto Mountain Lodge, Arusha, Tanzania**

OUTLINE

1 – KIRDI BACKGROUND

2 – QUALIFICATION, APPOINTMENT & STRATEGY

3 – CURRENT STATUS AND CHALLENGES

4 – CONCLUSION

1. KIRDI Background

- The Kenya Industrial Research and Development Institute (**KIRDI**) was established under the Science and Technology Act, 1979, Cap 250 of the Laws of Kenya (*Now repealed and replaced by the Science, Technology and Innovation Act, 2013*)



KIRDI

Your Industrial Technology Partner...

Mandate



- The institute is mandated to undertake research and development in all industrial and allied technologies, including:
 - Energy
 - Environment
 - Industrial chemistry
 - Ceramics and clay technologies
 - Textile and Leather
 - Mechanical, civil and chemical engineering
 - Food
 - Information and Communication Technology

2. Qualification & NDE Appointment

- The Institute was appointed **through the MOEWNR and UNFCCC Secretariat** as **NDE** for Kenya.
 - Thus, is responsible for operationalisation and coordination of CTCN activities in Kenya.
- **Technologies developed (or being)**: Drip Irrigation, biogas, clean cook-stoves, Charcoal Kilns, fuel briquettes, tolerant sorghum, organic leather tanning,
- **Policies intervened (or being)**: solar, biogas, LED lighting, bioethanol, Energy efficiency, Clean cook-stoves, small hydro-power, mini- & micro-grids, biotechnology,
- **Efforts of Power Sector**: National energy Day – Wind, Geothermal, Solar – but IPPs tariffs & PPAs processes

KIRDI: Progress in Green Technologies

Biogas technology



Biogas plant



KIRDI: Green Technologies

Biogas Stove



Gasifier stoves



KIRDI: Green Technologies

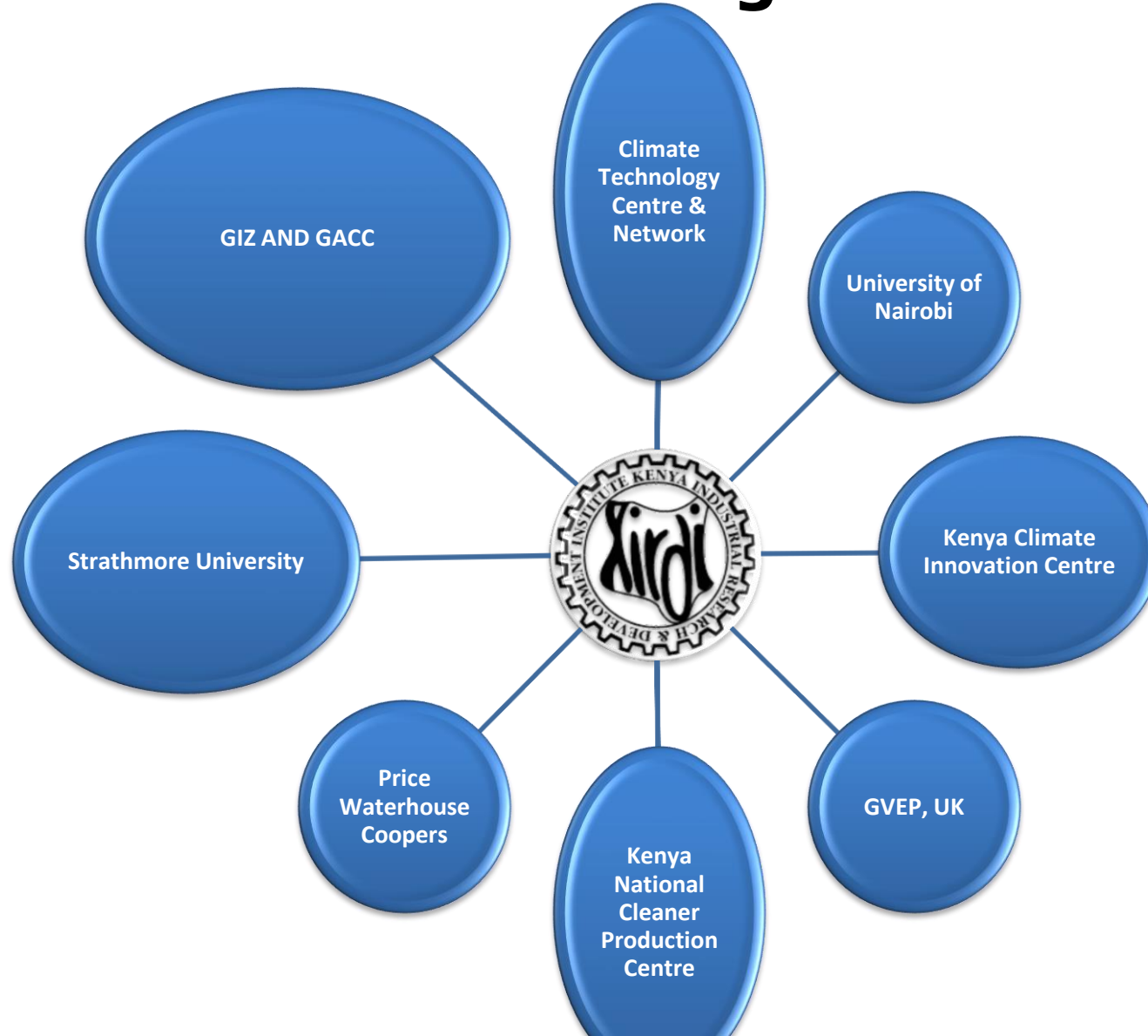
Bioethanol stove - CCL



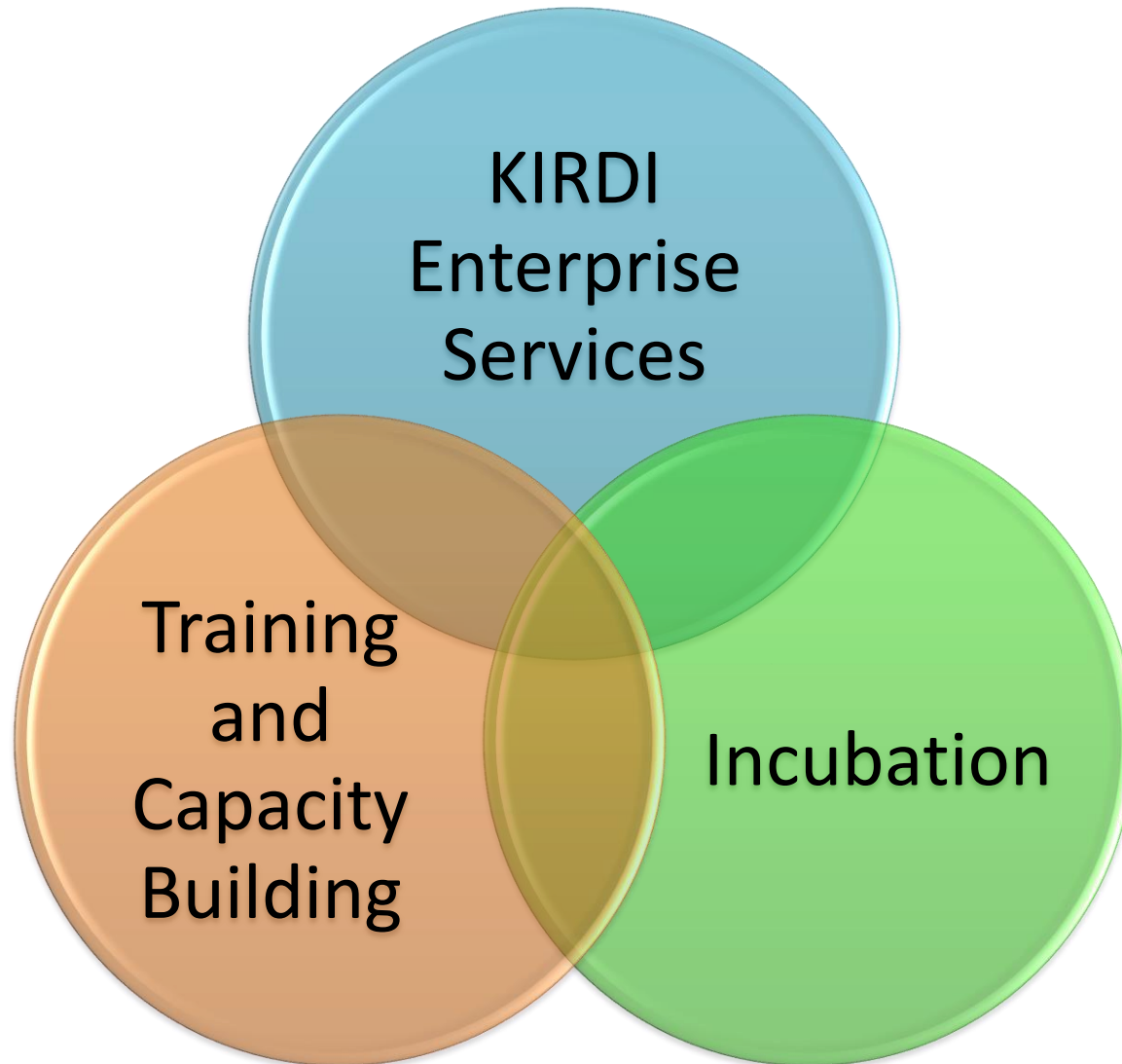
Wisdom Innovation (GACC Support) – do user training



Partners in Climate Related Technologies



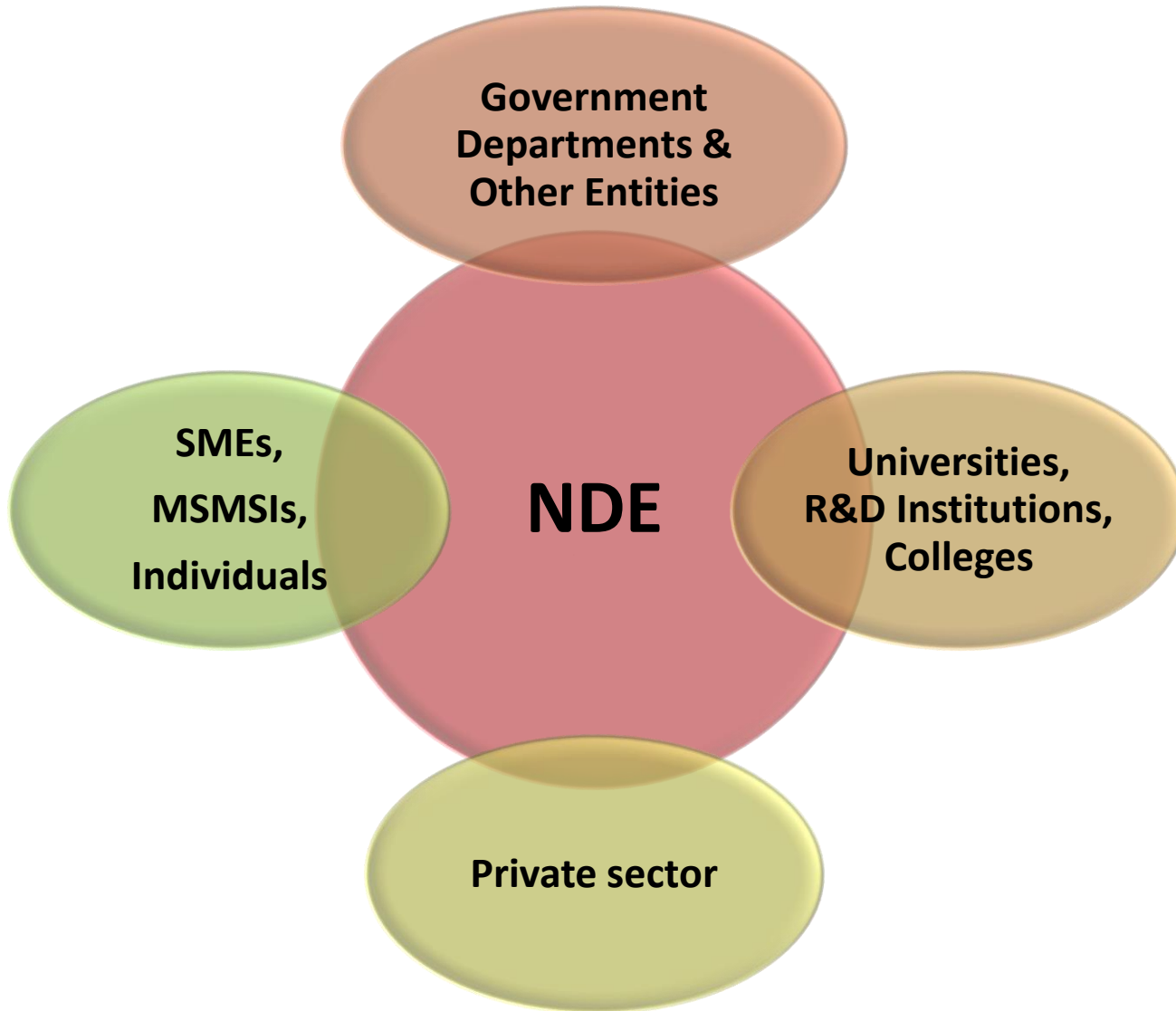
Support for Entrepreneurship and Technology Transfer



NDE Operationalisation



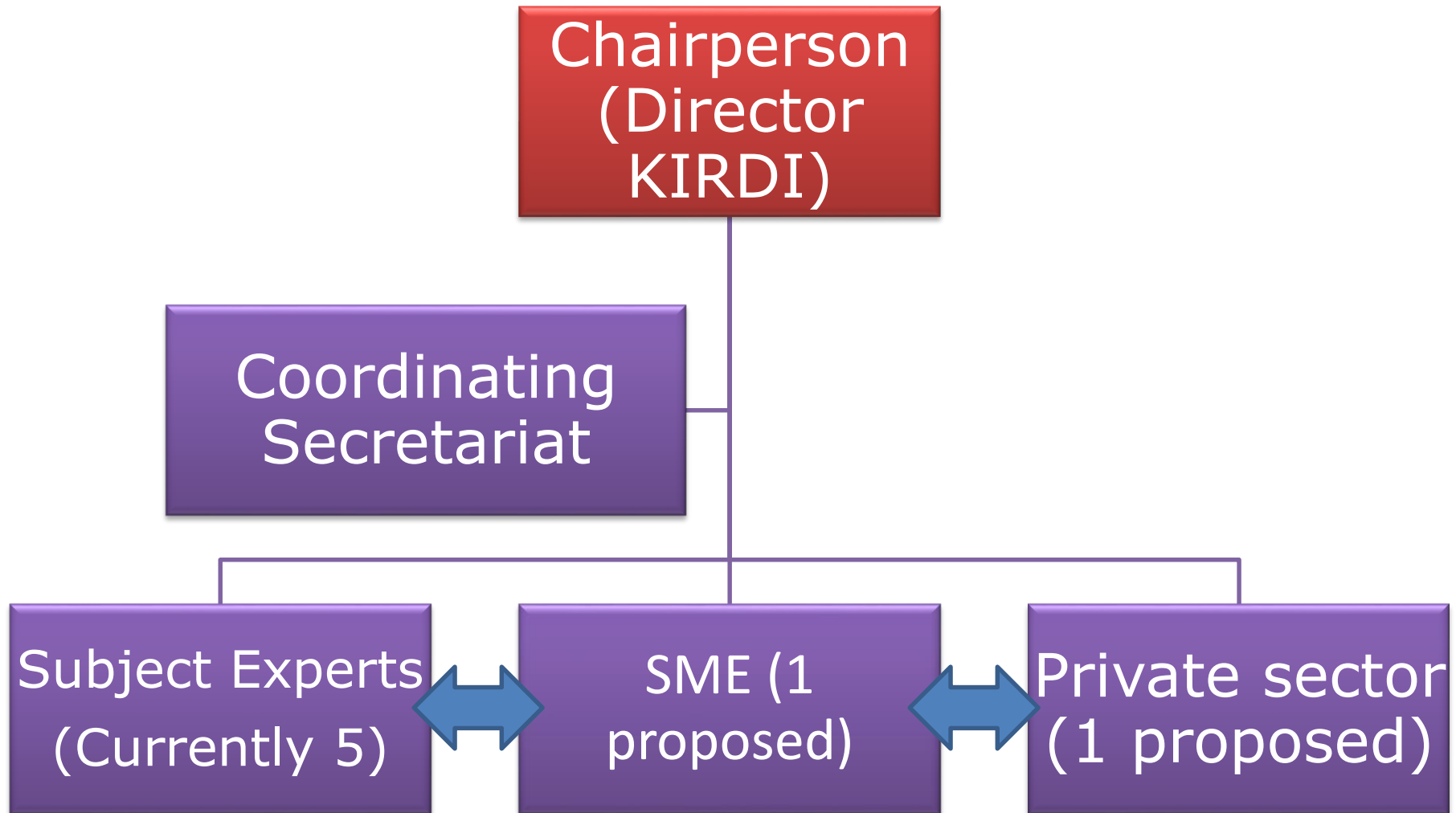
NDE Engagement Strategy



3 Current status & Challenges

- Developed NDE's Draft TORs (pending approval)
- Developed Draft Criteria for Membership & Governance structure
- Key stakeholders mapping done
- Created NDE E-mail: NDE@kirdi.go.ke
- 2 No. requests have been evaluated by the committee, one submitted.

Governance Structure



NDE Challenges

- Main challenges:
 - Resources to facilitate administrative and operational costs
 - To link NDE with grand on-going efforts (Vision 2030, KIRDI objectives, INDC, LECRD, EE of MOE/KAM, 5000+MW by 2017,

4. Conclusion

- Legal mandate and experience of KIRDI formed a firm ground for NDE tasks
- There are great opportunities for our researchers, industries and private sector to benefit from.
- The strategy drafted, if adapted well, can deliver major tasks of CTCN
- Main challenges outlined need urgent solution

**Kenya Industrial Research & Development
Institute (KIRDI)**

**South "C" Campus, Popo Road,
P. O. BOX 30065 – 00100,
Nairobi, Kenya.**

dir@kirdi.go.ke, NDE@kirdi.go.ke

