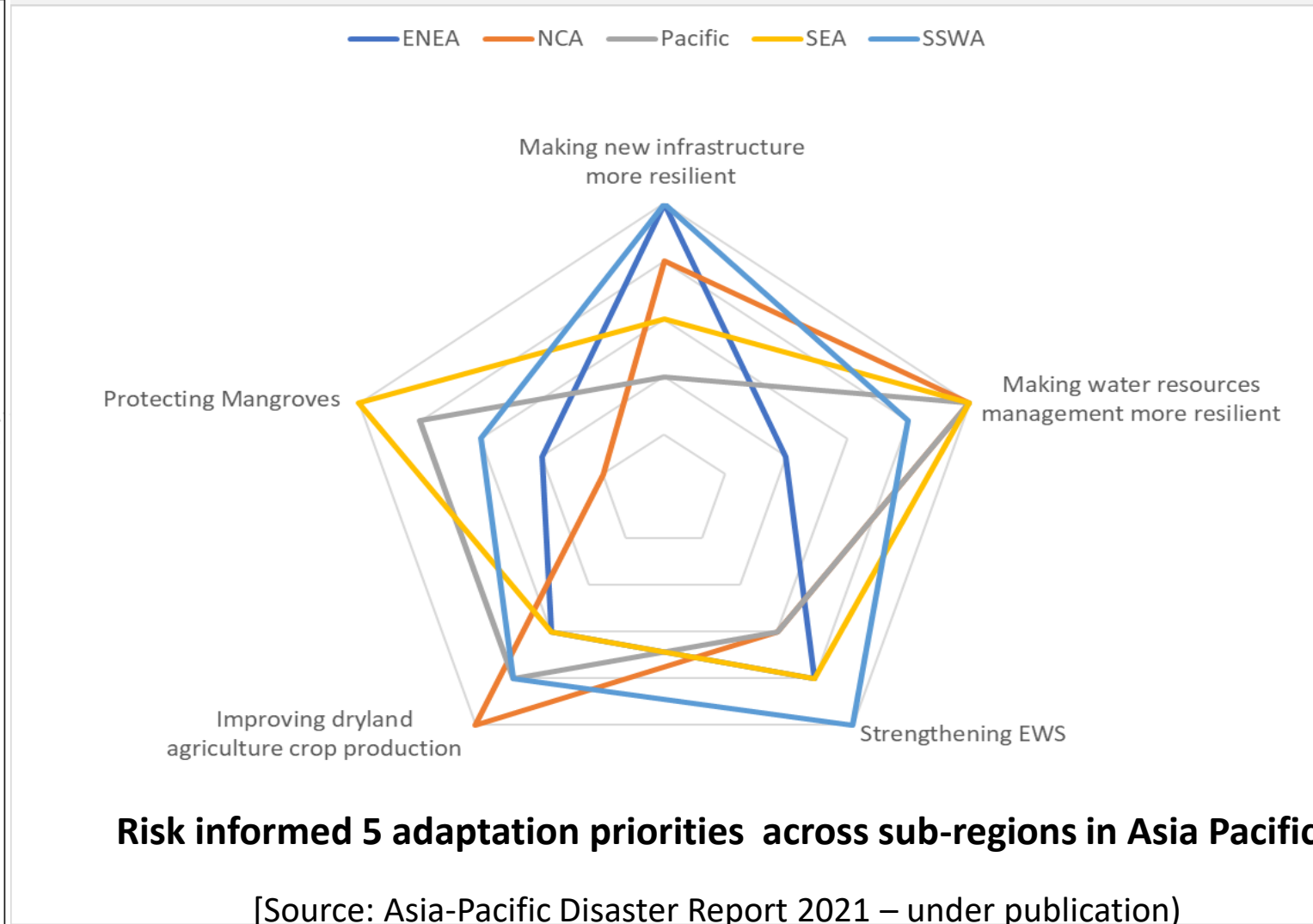
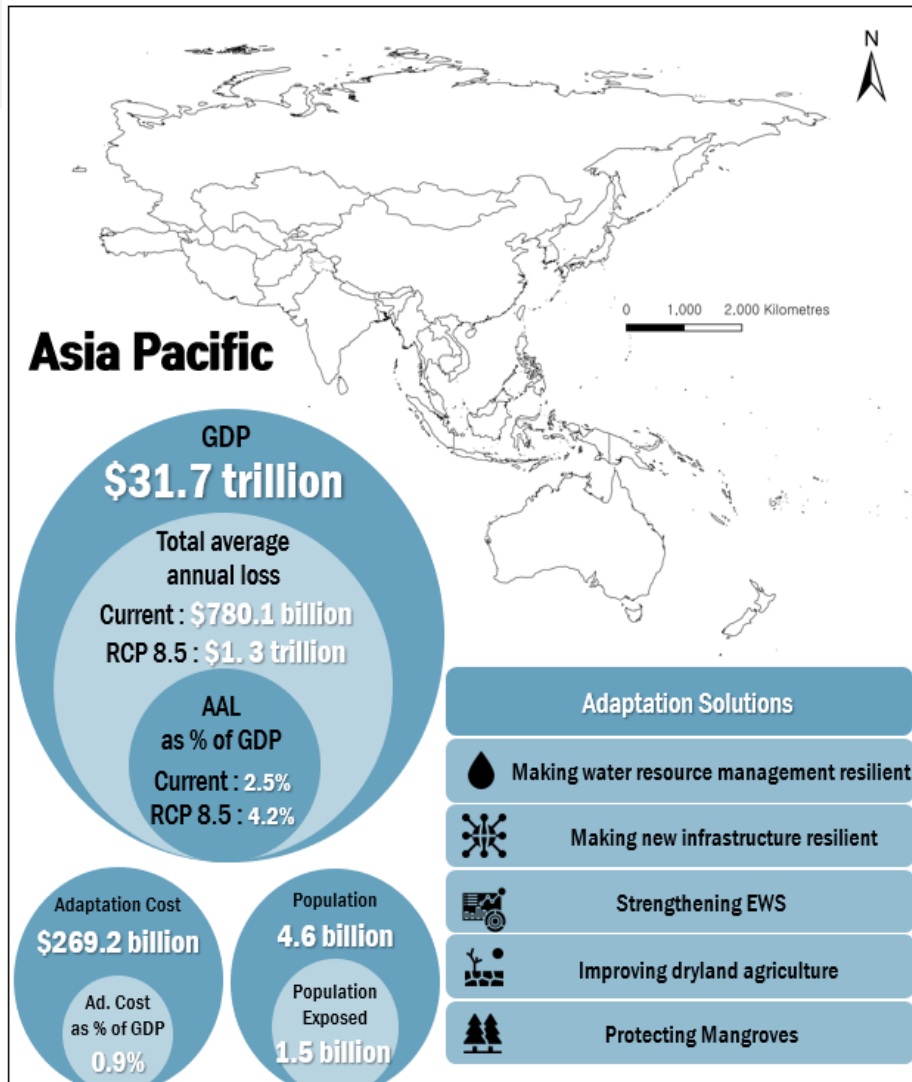


1

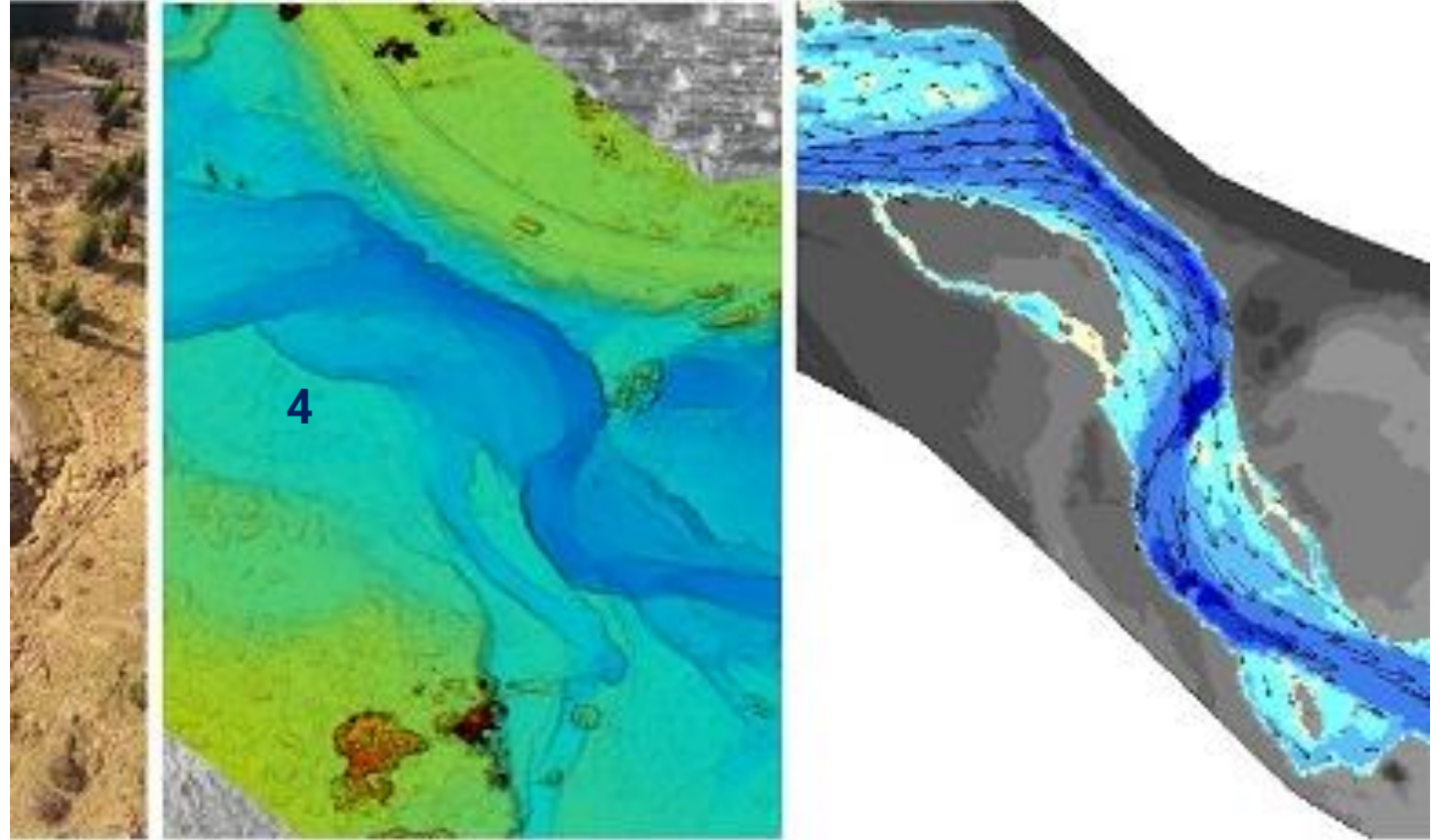
In Asia-Pacific, Annualized Average Disaster Loss @ RCP 8.5 is \$1.3 trillion, while cost of adaptation is \$269 billion (5:1 Benefit Cost Ratio)



2

Accelerating Adaptation: Integrating economic, social and environmental concerns

Data science promote policy action on integrating grey and green infrastructure – the next generation infrastructure

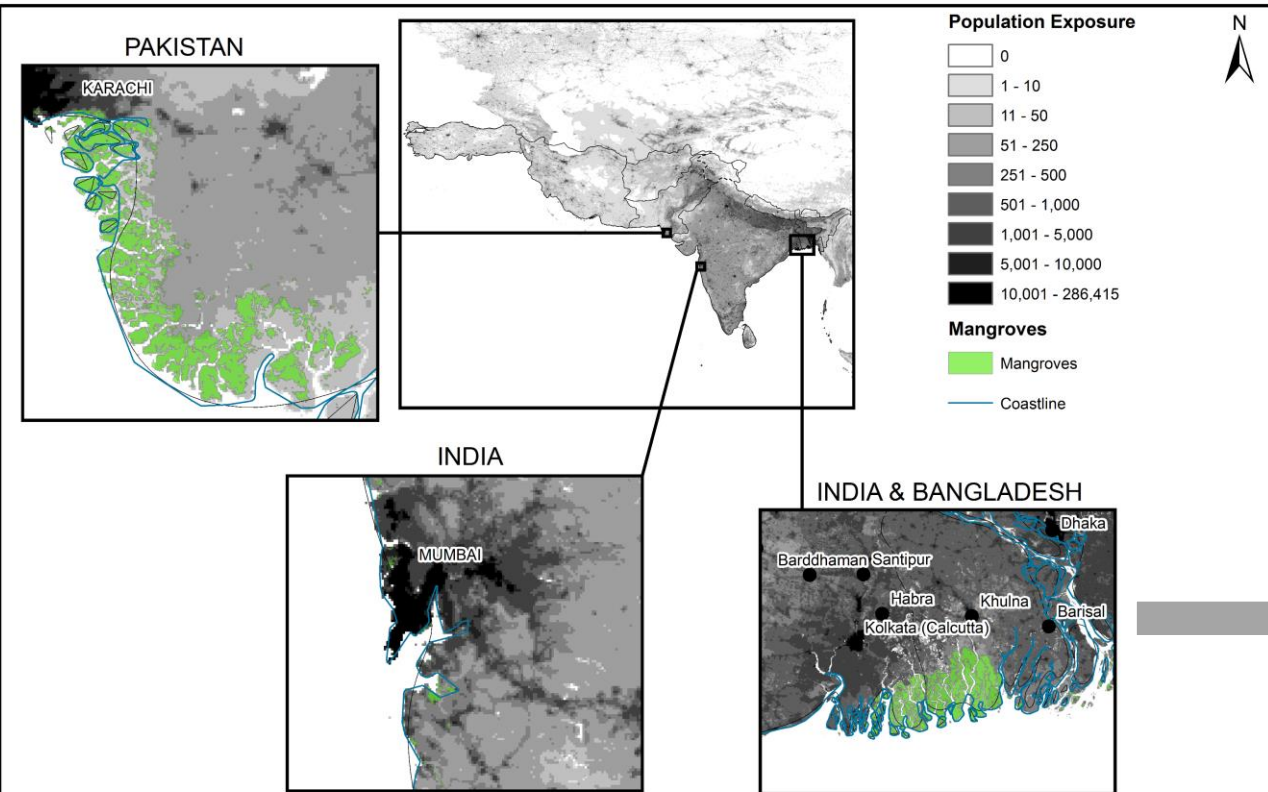


Coupling of spatially-explicit 2-D hydrodynamic analyses with economic models finds that mangroves provide flood protection benefits exceeding \$US 65 billion per year.

3

Grey and green infrastructure for coastal protection must be risk informed

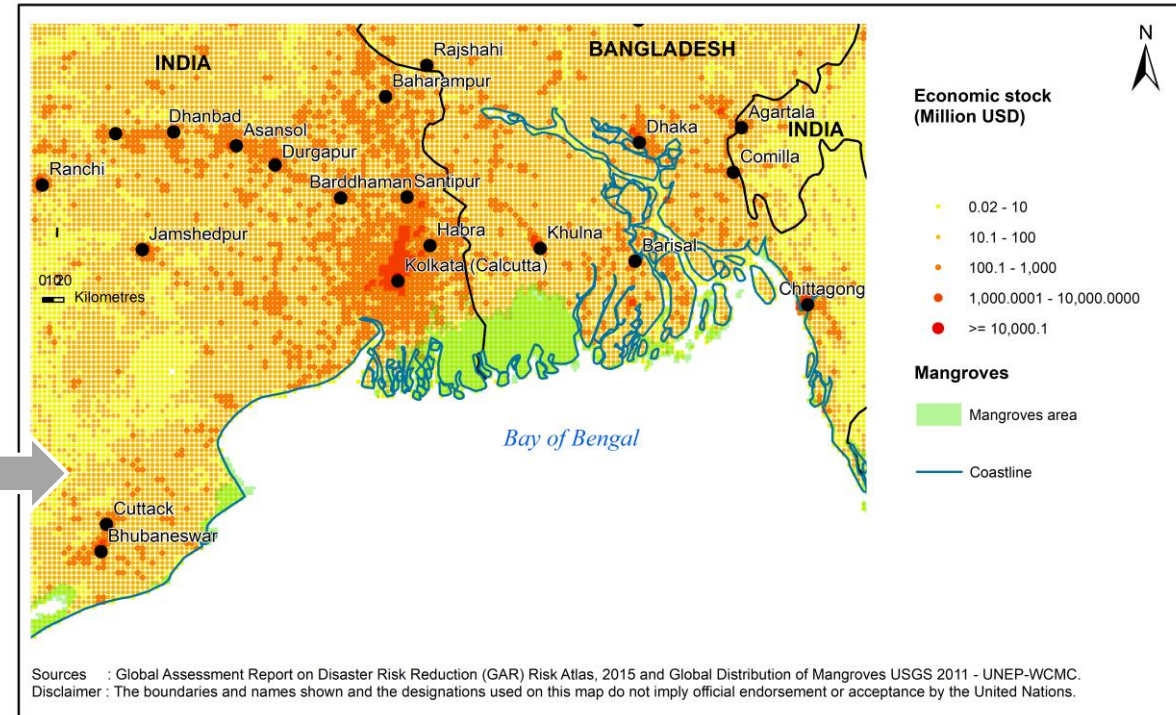
Population exposure in South Asia



Sources : Worldpop Population Counts 2020 and Global Distribution of Mangroves USGS 2011 - UNEP-WCMC.

Disclaimer: The boundaries and names shown and the designations used on this map do not imply official endorsement or acceptance by the United Nations. Dotted line represents approximately the Line of Control in Jammu and Kashmir agreed upon by India and Pakistan. The final status of Jammu and Kashmir has not yet been agreed upon by the parties.

Exposed economic stock exposure in coastal cities nearby Sundarbans area



Sources : Global Assessment Report on Disaster Risk Reduction (GAR) Risk Atlas, 2015 and Global Distribution of Mangroves USGS 2011 - UNEP-WCMC.
 Disclaimer : The boundaries and names shown and the designations used on this map do not imply official endorsement or acceptance by the United Nations.

4

Climate technologies accelerate adaptation and resilience track of climate action

#Track 1: Reduce/Prevent



Managing food (agriculture),
water and energy

Climate-resilient water
infrastructure

#Track 2: Prepare/Resond



Risk assessment, monitoring,
and early warning

Climate services, data and
innovations

#Track 2: Restore/Recover



Risk financing and insurance

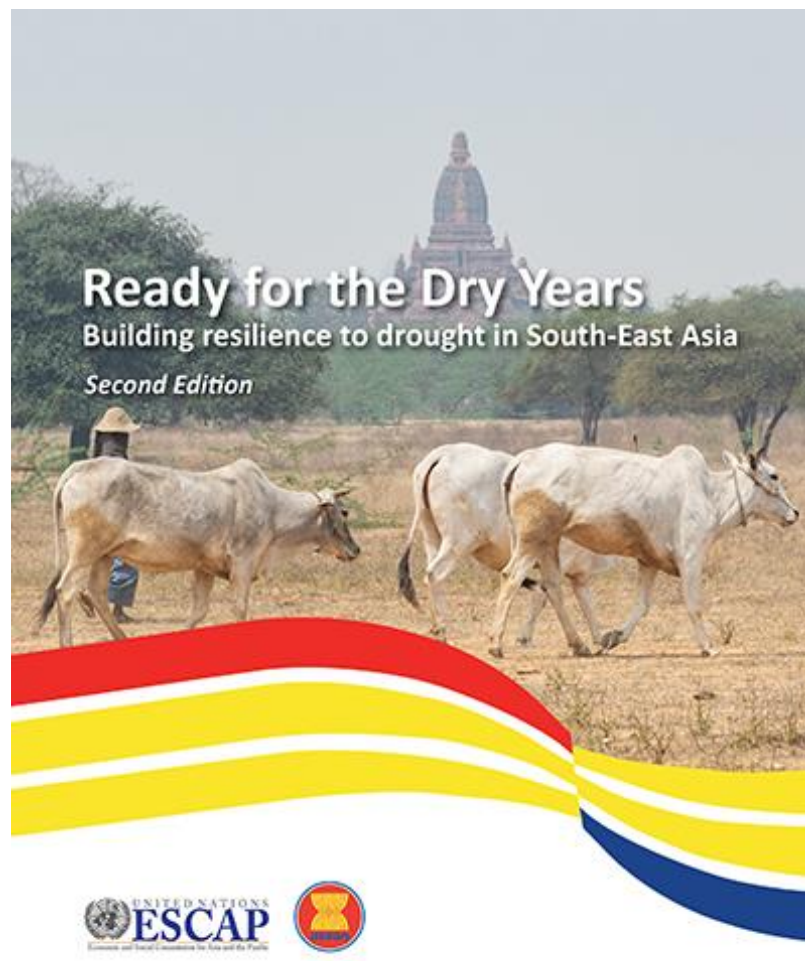
Forecast-based financing

Social safety nets

Thank you !

For any query, please contact:

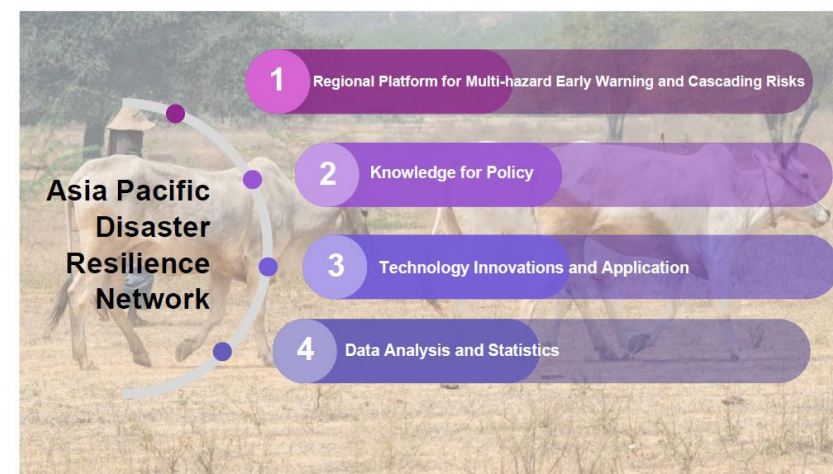
Sanjay Srivastava
Chief, Disaster Risk Reduction
ESCAP, Bangkok
srivastavas@un.org



ICT and Disaster Risk Reduction Division

Capacity development toolkit 7/2020

Adaptation and Resilience to Drought: From know how to do how A guidebook for the practitioners [Based on the case studies from South East Asia]



For more information, please contact: ICT and Disaster Risk Reduction Division Economic and Social Commission for Asia and the Pacific (ESCAP) United Nations Building, Rajadamnern Nok Avenue, Bangkok 10200, Thailand
Email: escap-ict@un.org
<https://www.unescap.org/our-work/ict-and-disaster-risk-reduction/regional-cooperation-disaster-risk-reduction>