

# Technical Assistance Closure Report Template

---

## Objective of the technical assistance (TA) Closure Report:

- To communicate publicly in one document a summary of progress made and lessons learned during the TA towards the anticipated impact (sections 1-4).
- To document qualitative and quantitative data collected during TA, for use in donor and UN reporting (Annex 1).

## Steps for completing the TA Closure report:

1. The lead TA implementer submits the closure report at the end of the technical assistance as a final deliverable. The TA closure report will capture outputs, outcomes and impacts of all activities conducted under the TA. Please copy and summarise relevant material from previous TA outputs/deliverables and the Response Plan, as relevant.
2. A CTCN Manager will review and revise the closure report before final approval by the CTCN Deputy Director.

## Important note on public and internal use of the closure report:

Once approved by the CTCN Deputy Director, the TA closure report will be a public document available on the CTCN website [www.ctc-n.org](http://www.ctc-n.org). Selected content will be used for targeted communication activities. Annex 2 is for internal use only and will not be publicly available.

---

## Closure Report for CTCN Technical Assistance

### 1. Basic information

Title of response plan	Development of Energy Efficiency Standards and Labelling program for electric motors, transformers, washing machines and TVs in Lebanon
Technical assistance reference number	2018000015
Country / countries	Lebanon
NDE focal point and organisation	Ms. Samar Malek Acting Head of the Service of Environmental Technology Ministry of Environment, Lebanon <a href="mailto:samar@moe.gov.lb">samar@moe.gov.lb</a> , <a href="mailto:climatechange@moe.gov.lb">climatechange@moe.gov.lb</a>
Proponent focal point and organisation	Ms. Samar Malek Acting Head of the Service of Environmental Technology Ministry of Environment, Lebanon <a href="mailto:samar@moe.gov.lb">samar@moe.gov.lb</a> , <a href="mailto:climatechange@moe.gov.lb">climatechange@moe.gov.lb</a>
Designer of the response plan	CTCN
Implementer(s) of technical assistance	HEAT GmbH
Beneficiaries	MoU Ministry of Environment Ministry of Energy
Sector(s) addressed	Energy Efficiency
Technologies supported	Distribution transformers, Electric Motors, Washing Machines, Televisions

Implementation period and total duration in months	April 2022 – March 2024 (24 Months), extended to September 2024.
Total budget for implementation	USD 584,048
Description of delivered outputs and products as well as the activities undertaken to achieve them. In doing so, review the log frame of the original response plan and refer to it as appropriate	<p>Support the adoption of robust MEPS policies in Lebanon to support a transition to efficient appliances, reducing emissions, and improving the robustness of the electricity system through:</p> <ul style="list-style-type: none"> <li>• Development of MEPS for TV, washing machines, electric motors, and distribution transformers.</li> <li>• Development of an appliance labelling scheme.</li> <li>• Development of a strong MVE program, including international best practice for market surveillance and product testing as well as a Product Registration System (PRS).</li> <li>• Designing consumer awareness campaigns and the concept for an information web portal.</li> <li>• Implementation of a sustainable finance mechanism for the transition to highly efficient appliances.</li> </ul>
Methodologies applied to produce outputs and products	<p>A variety of methodologies were employed including:</p> <ul style="list-style-type: none"> <li>• Market survey</li> <li>• Stock and flow modelling</li> <li>• Policy analysis</li> <li>• Public consultation</li> <li>• Policy development</li> <li>• Regulatory assessment</li> <li>• Graphic design</li> <li>• Strategic development</li> </ul>
Deviations	<p>The project had some deviations largely due to government agencies difficulties to plan for the long term and commit to actions in the current political environment. This includes:</p> <ul style="list-style-type: none"> <li>• Development of PRS system was not possible as it requires an agency to take it over, host it, maintain it, update it etc.</li> <li>• Development of an information web portal to engage with consumers on the topic of MEPS. Similarly this was not possible due to difficulties of the government to host, maintain, and update it.</li> <li>• The gender assessment was conducted at a higher level without details per product type due to limited availability of information.</li> </ul> <p>Alternatives for these components were developed as follows:</p> <ul style="list-style-type: none"> <li>• A PRS system was conceptualized in technical, informational, and structural capacities to support its eventual development and deployment in the future.</li> <li>• Similarly, an information web portal was conceptualized providing a sense of the structure,</li> </ul>

	<p>information content design features, etc., that would be advisable when it is implemented.</p> <ul style="list-style-type: none"> <li>Gender aspects were included in the development of the overarching MEPS document to ensure that development and implementation of all individual MEPS would be subject to robust gender considerations.</li> </ul>
<p>Anticipated follow-up activities and next steps</p>	<p>The current political situation in Lebanon and the bordering region make any progress difficult.</p> <p>Once a more stable situation is achieved, some possible follow up actions include:</p> <ul style="list-style-type: none"> <li>Update the MEPS and labelling policies and submit them to cabinet/parliament for enactment.</li> <li>Develop a timeline for implementation.</li> <li>Develop the MVE capacity including the PRS system to support enforcement.,</li> <li>Engage the public to encourage positive behaviours through campaigns and the information web page_</li> </ul>

## 2. Lessons learned

	Lessons learned	Recommendations
<p>Lessons learned from the CTCN TA process</p>	<p><i>Key lessons for project development include:</i></p> <ol style="list-style-type: none"> <li><i>The consulting rates currently assumed to estimate the budget of projects could do with a review to account for industry changes, inflation, etc.</i></li> <li><i>Ensure that projects have strong local connections to execute the project</i></li> <li><i>Ensure that governments understand the implications of all the deliverables of TAs as some of them have implications for long term resource planning.</i></li> <li><i>Progress reporting presents many redundancies with same content repeated across several reports and platforms.</i></li> </ol>	<p><i>Recommendations include</i></p> <ul style="list-style-type: none"> <li><i>Allow projects to have access to contingency funds for flexibility when needed due to reasons external to the project.</i></li> <li><i>Streamline reporting processes, especially when multiple donor/coordinating agencies are involved in their own processes. In this case CTCN and GCF had significant redundant processes.</i></li> </ul>
<p>Lessons learned related to climate technology transfer</p>	<ol style="list-style-type: none"> <li><i>Design projects with multiple government agencies to enable the</i></li> </ol>	<ul style="list-style-type: none"> <li><i>Ensure implementing agency mandate/commitment to push actions through.</i></li> </ul>

	<p><i>project to leverage support from different sources.</i></p> <p>6. <i>Climate actions can be very political and it is important to ensure that the implementing agencies have the mandate or commitment to push them through to completion to achieve objectives.</i></p>	
--	--	--

### 3. Illustration of the TA and photos

For communication purposes, please provide 2-4 Power Point slides, including illustrations or charts, describing barriers, opportunities, methodology, activities, outputs and achieved results. The illustrations must be copied into the TA Closure report but must also be delivered as power point files. Also, please provide at least five high-resolution pictures in jpg format, capturing technical assistance. The pictures should illustrate how the TA has impacted the lives of the beneficiaries in particular and the communities in general.

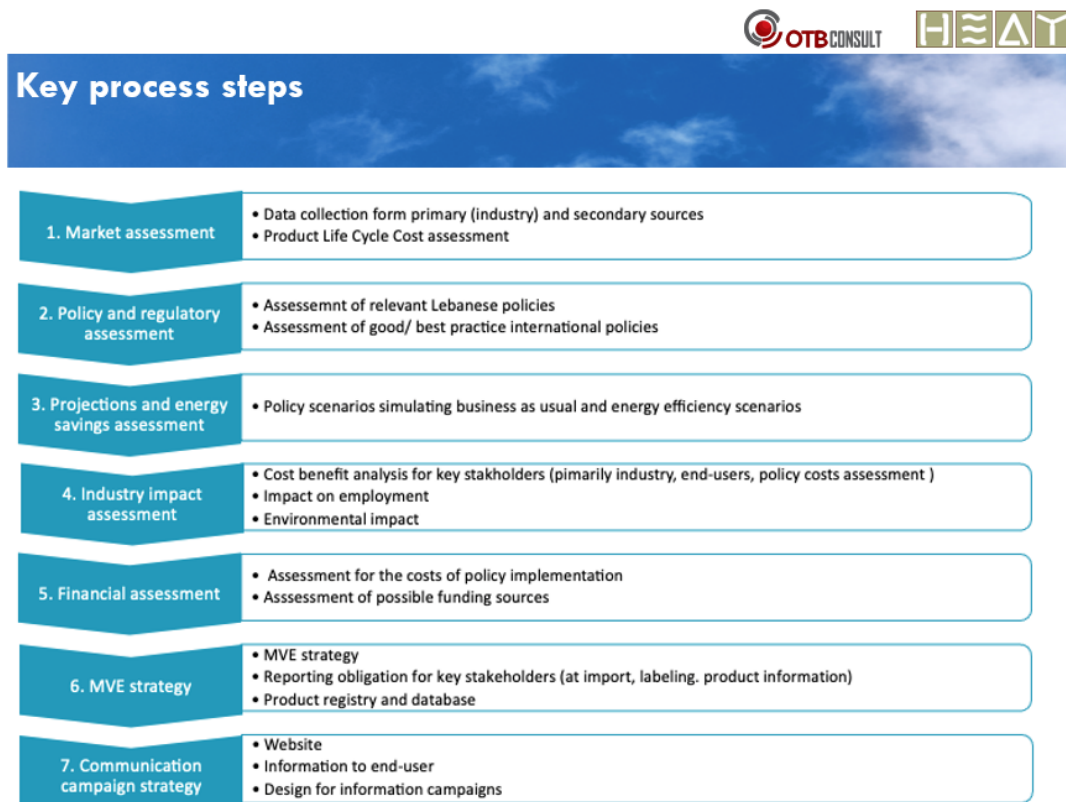


Figure 1 - Project process as envisaged at the beginning of the project. Some changes were implemented dues to arising political barriers to the work.



Figure 2 - Market survey examples of how appliances are displayed and the available information



Figure 3 - Enforcement philosophy

## Stakeholders Dynamics

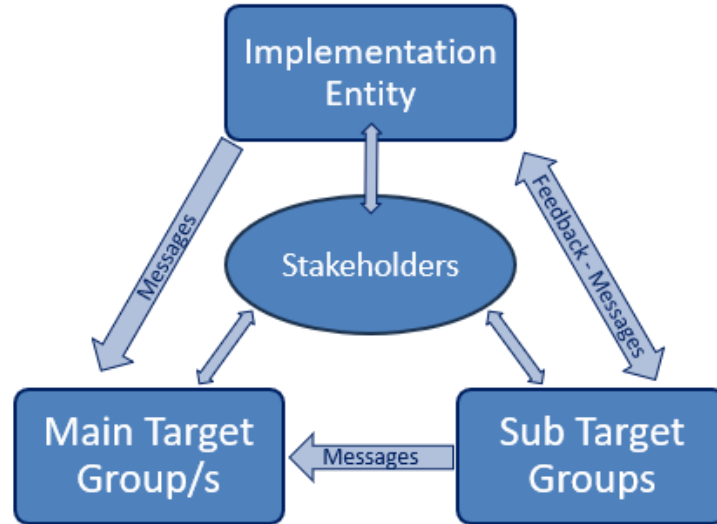


Figure 4 - Communications strategy indicating engagement directionality between stakeholders.

UN Climate Technology Centre & Network  
UNFCCC Technology Mechanism

GREEN CLIMATE FUND

UN environment programme

قراءة ملصقات أجهزة التلفاز

رمز QR

فئات كفاءة الطاقة

مقياس كفاءة الطاقة من A إلى G

استهلاك الطاقة ١٠٠٠ /SDR (كيلوواط ساعة)

استهلاك الطاقة HDR / 1000 (كيلوواط ساعة)

قطر الشاشة (سم، بوصة)، الدقة الأفقية والرأسية (بمكسل)

UN Climate Technology Centre & Network  
UNFCCC Technology Mechanism

GREEN CLIMATE FUND

UN environment programme

أجهزة التلفاز الموفرة للطاقة  
تخفض نسبة %؟؟؟  
من فاتورة الكهرباء

دور على الملصق

ولتخفيض استهلاك الكهرباء تكون الأسبق

والطاقة الموجودة على اللبانتين تلحق

والسيطرة على غازات الدفيئة يتحقق

Figure 5 - Information brochure to inform consumers on how to read and use an energy performance label in Arabic.

#### 4. Impact Statement

The information in the table below will be used to communicate results and anticipated impacts of this technical assistance publicly. Please copy information from impact statement developed in the M&E Plan and update as relevant.

<p><b>Challenge</b></p>	<p><i>The electricity sector in Lebanon suffers from several problems that make the electricity produced not sufficient to supply to demand. High technical and non-technical losses, aging infrastructure and inadequate electricity tariffs are some of the key issues.</i></p> <p><i>This situation has led to chronic under-capacity, disruptions in the system and the appearance of private generators supply electricity to end-users through an informal, yet tolerated, secondary market. The associated perception of the public in the country is that energy costs are high and there is no real mechanism to decrease them.</i></p> <p><i>Without the development of energy-efficient policies, inefficient products will continue to enter the market and remain strained on the grid for their useful life.</i></p>
<p>CTCN Assistance</p>	<p><i>2 to 4 bullet points. Approximately 450 characters with spaces</i></p>
<p>Anticipated impact</p>	<p><i>Support the adoption of MEPS in Lebanon to transition to efficient appliances, reducing emissions, and improving the electricity system through:</i></p> <ul style="list-style-type: none"> <li><i>• Adoption of MEPS for TV, washing machines, electric motors, and distribution transformers.</i></li> <li><i>• Adoption of an appliance labelling scheme.</i></li> <li><i>• Adoption of a strong MVE program, including international best practice for market surveillance and product testing.</i></li> <li><i>• Designing consumer awareness campaigns.</i></li> <li><i>• Implementation of a sustainable finance mechanism for the transition to highly efficient appliances.</i></li> </ul>
<p>Co-benefits: Achieved or anticipated co-benefits from the TA</p>	<p><i>The anticipated benefits of the TA relate to enabling and accelerating the transformation of appliances markets through the introduction of a MEPS programme.</i></p> <p><i>To date the only benefits include increased capacity and awareness of MEPS tools and</i></p>

	<p><i>implementation in stakeholders that participated in the TA.</i></p> <p><i>However, the successful implementation of the MEPS programme aims at achieving benefits such as:</i></p> <ul style="list-style-type: none"> <li>• <i>Reduce electricity demand from appliances</i></li> <li>• <i>Reducing stress on the electricity system which currently relies on informal fossil fuel-based generators for a significant proportion of demand.</i></li> <li>• <i>Reduce electrical losses which would also reduce strain on the electricity grid.</i></li> <li>• <i>Reduce the cost of the electricity system for government as electricity is subsidized.</i></li> <li>• <i>Reduce the cost of meeting energy service needs to final consumers.</i></li> <li>• <i>Reduce GHG emissions as the system will be less reliant on secondary fossil-based electricity producer.</i></li> </ul> <p><i>Achieving these benefits is dependent on the eventual implementation of this initiative.</i></p>
<p>Gender aspects of the TA</p>	<p><i>The project included a component of gender issues consultation through the participation of women's groups in Lebanon and also includes a gender issues expert in the team to ensure the considerations take place and are reflected in the final deliverables.</i></p> <p><i>Consultation with NCLW resulted in increased understanding of the gender related issues on energy related policy and a component of gender awareness is included in the proposed overarching policy to ensure that when MEPS are implemented, policies, communications, and implementation methods consider how both genders engage with these markets.</i></p>
<p>Anticipated contribution to NDC</p>	<p><i>In the 2020 updated NDCs, Lebanon is committed to reducing its emissions by 20% (unconditionally) and 31% (conditional to international support). Further, Lebanon is committed to generate 18% of its electricity from renewable sources.</i></p>

	<p><i>This deliverable of the project support meeting these objectives through the reduction of stress in the electricity system, reduction of losses, and enabling the system to better adapt to a changing environment.</i></p> <p><i>These benefits however will only become tangible when the MEPS are implemented.</i></p>
<p>The narrative story</p>	<p><i>The electricity sector in Lebanon suffers from several problems that make the electricity produced not sufficient to respond to the increasing demand. These problems range from a historical average increase in electricity consumption of ca. 5% p.a. (exacerbated by the influx of Syrian refugees), to high technical and non-technical losses, to aging of power plants and inadequate electricity tariffs.</i></p> <p><i>Electricity generation in Lebanon is primarily provided through Heavy Fuel Oil power plants. The combination of poor efficiency of the power plants, high system losses and low average electricity price results in an annual net transfer from the government to EDL (the national utility company) of USD 1-1.5 bn a year, depending on the oil prices. This represents a substantial portion of the budgeted USD 4.8 bn deficit in 2018.</i></p> <p><i>This situation has led to chronic under-capacity, electricity disruptions in the system and the widespread appearance of private generator businesses that cover the electricity needs of the end-users through an informal, yet tolerated, secondary electricity connection. The associated perception of the general public in the country is that energy costs are high and there is no real mechanism to decrease them.</i></p> <p><i>In the last decade, Lebanon has developed a number of initiatives to minimize electricity demand and support the development of renewable electricity generation including:</i></p> <ul style="list-style-type: none"> <li><i>• National Energy Efficiency Action Plans.</i></li> <li><i>• National Renewable Action Plan.</i></li> <li><i>• Standards for solar water heaters.</i></li> <li><i>• Mandatory standards for Solar Water Heaters.</i></li> <li><i>• The National Energy Efficiency and Renewable Energy Initiative (NEREA), a financing instrument for EE and RE.</i></li> </ul>

	<p><i>Despite these actions, the implementation of the EE is lagging and this CTCN assistance provided the needed technical inputs to push energy efficiency in four technologies that can collectively deliver significant savings including:</i></p> <ul style="list-style-type: none"> <li>• <i>Setting MEPS levels and providing a plan to future proof the program with periodic revisions to maintain the transition momentum.</i></li> <li>• <i>Providing a compliance mechanism along with market surveillance techniques and enforcement options for non-compliance.</i></li> <li>• <i>Provide a product registration online system to support compliance processes, data collection, and public information.</i></li> <li>• <i>Provide public information and marketing campaign for public awareness of the benefits of energy efficiency, MEPS, and emissions reductions.</i></li> <li>• <i>Provide options to fund the MEPS mechanism sustainably, specially looking to securing the program in the events of changing political will.</i></li> </ul> <p><i>The outputs delivered can support a transition to highly efficient appliances to deliver benefits for including:</i></p> <ul style="list-style-type: none"> <li>• <i>Reduced carbon emissions.</i></li> <li>• <i>Reduced electricity losses by the system.</i></li> <li>• <i>Reducing the costs of the electricity system that transfer to consumers.</i></li> <li>• <i>Reducing electricity bills for consumers.</i></li> <li>• <i>Increase reliability of electricity grid.</i></li> <li>• <i>Increase access to electricity</i></li> <li>• <i>Support poverty relief efforts.</i></li> </ul>
<p>Contribution to SDGs</p> <p>A complete list of SDGs and their targets is available here: <a href="https://sustainabledevelopment.un.org/partnership/register/">https://sustainabledevelopment.un.org/partnership/register/</a></p>	<ul style="list-style-type: none"> <li>• <b>SDG 1:</b> <i>End poverty in all its forms everywhere - Energy efficiency supports the elimination of fuel poverty as well as supporting lower energy bills supporting HH poverty reduction. Similarly, if it supports the reduction of government costs through reduce expenditure on subsidies, it supports the use of those funds to further reduce poverty.</i></li> <li>• <b>SDG 7:</b> <i>Ensure access to affordable reliable, sustainable, and modern</i></li> </ul>

*energy for all – Energy efficiency is an essential building block for the achievement of this goal as it is necessary to reduce the rising demand and better enable the increasing supply of sustainable energy to reach all users. Similarly, EE also supports poorer communities access energy services at a lower cost increasing the coverage of sustainable energy.*

- **SDG 9:** *Build resilient infrastructure, promote inclusive and sustainable industrialization and foster innovation - MEPS programs promote product innovation among local manufacturers to improve the performance and quality of systems. Similarly, reduction of system losses and implementation of modern technology supports the integration of further advanced resilient infrastructure such as the implementation of distributed renewable electricity generation.*
- **SDG 13:** *Take urgent action to combat climate change and its impacts: Strengthen resilience and adaptive capacity to climate-related hazards and natural disasters in all countries – MEPS and other EE initiatives reduce energy demand, promote RE and support awareness raising in consumers.*

## Annex 1 Technical assistance data collection

Please add quantitative and qualitative values for the indicators selected in the M&E plan and monitored throughout the technical assistance in the tables below. Indicators which have been monitored in addition to the proposed indicators below may be added at the end of table A. Non-relevant indicators should be left blank.

### A. Output and outcome indicators

<b>Indicator</b>	<b>Quantitative value</b> Value and unit	<b>Qualitative description</b> List the various elements corresponding to the quantitative value as well as timelines and responsible institutions
Please note indicators below highlighted as <b>anticipated</b>		
Number of communication and outreach activities conducted by proponents and implementing partners to showcase CTCN support	10	<i>The activities of engagement included: Policy working group meetings Consultation with key stakeholders on technical or social issues. Inception meeting Consultation of Final outputs.</i>
Number of participants in the events above	~120	<i>This figure is estimated as not all the meetings had official records.</i>
a) Number of men	85	
b) Number of women	35	
Number of training sessions and capacity strengthening activities	N/A	<i>The ToR did not include capacity building events. Capacity strengthening activities included the development of deliverables such as an MRV report, but no events.</i>
Number of people who received the training	N/A	
a) Number of men	N/A	
b) Number of women	N/A	
Total number of institutions trained	N/A	
a) Number of research organisations, laboratories and universities	N/A	
b) Number of private companies	N/A	
c) Number of cities and local government	N/A	
d) Number of communities	N/A	
e) Number of ministries	N/A	
f) Number of specialised governmental institutions	N/A	
g) Number of non-profit organisations	N/A	
Percentage of participants reporting satisfaction with CTCN training (from CTCN training feedback form)	N/A	<i>Satisfied= 3+ on 5-pt scale</i>

		<i>Indicate breakdown of categories here based on the results of the CTCN training feedback forms</i>
Percentage of participants reporting increased knowledge, capacity and/or understanding as a result of CTCN training (from CTCN training feedback form)	<b>N/A</b>	<i>Increased knowledge, capacity and/or understanding= 3+ on 5-pt scale</i>  <i>Indicate breakdown of categories here based on the results of the CTCN training feedback forms</i>
a) Number of men	<b>N/A</b>	
b) Number of women	<b>N/A</b>	
Total number of deliverables produced during the assistance (excluding mission, progress and internal reports)	<b>37</b>	
a) Number of tools and technical documents strengthened, revised or developed	<b>12</b>	<ol style="list-style-type: none"> <li>1. <i>Overarching policy document</i></li> <li>2. <i>Technical Regulation energy labels WM.</i></li> <li>3. <i>Technical Regulation energy labels TV.</i></li> <li>4. <i>Technical Regulation WM&amp;WD</i></li> <li>5. <i>Technical Regulation TV</i></li> <li>6. <i>Technical Regulation DT</i></li> <li>7. <i>Technical Regulation EM.</i></li> <li>8. <i>Market Study for WM and TV</i></li> <li>9. <i>Market Study DT and EM</i></li> <li>10. <i>MVE Reports</i></li> <li>11. <i>Product registration system</i></li> <li>12. <i>Communications strategy</i></li> </ol>
b) Number of other information materials strengthened, revised or created (For example training and workshop reports, Power Points, exercise docs etc.)	<b>25</b>	<i>Stakeholder consultation report</i> <i>PWG Report</i> <i>ToR for the PWG</i> <i>Stakeholder consultation report</i> <i>7 x PWG quarterly meeting reports</i> <i>14 x Promotional flyers and roll-ups</i>
Total number of policies, strategies, plans, laws, agreements or regulations supported by the assistance	<b>0</b>	
a) Adaptation related		
b) Mitigation related		
c) Both adaptation- and mitigation related		
<b>Anticipated</b> number of policies, strategies, plans, laws, agreements or regulations proposed, adopted or implemented as a result of the TA	<b>7</b>	
a) Adaptation related		<i>List the type of documents anticipated to be proposed, adopted or implemented</i>
b) Mitigation related	<b>7</b>	<ol style="list-style-type: none"> <li>1. <i>Overall MEPS policy - Overarching policy document</i></li> </ol>

		<ul style="list-style-type: none"> <li>2. <i>Individual product MEPS regulation - Technical Regulation energy labels WM.</i></li> <li>3. <i>Individual product MEPS regulation - Technical Regulation energy labels TV.</i></li> <li>4. <i>Individual product MEPS regulation - Technical Regulation WM&amp;WD</i></li> <li>5. <i>Individual product MEPS regulation - Technical Regulation TV</i></li> <li>6. <i>Individual product MEPS regulation - Technical Regulation DT</i></li> <li>7. <i>Individual product MEPS regulation - Technical Regulation EM.</i></li> </ul>
c) Both adaptation- and mitigation related		
<b>Anticipated</b> number of technologies transferred or deployed as a result of CTCN support	<b>3</b>	<i>Energy efficient appliances Energy efficient electric motors Energy efficient distribution transformers</i>
Number of South-South collaborations enabled during or through CTCN TA support	<b>N/A</b>	
Number of climate technology RD&D related outreach activities	<b>1</b>	<i>Support in development of PRS system outreach activities carried out with the UAE.</i>
Number of participants in climate technology RD&D related workshops and events	<b>N/A</b>	<i>Disaggregate by country</i>
a) Number of men	<b>N/A</b>	
b) Number of women	<b>N/A</b>	
<b>Anticipated</b> number of cooperative research, development, and demonstration programmes facilitated as a result of CTCN TA	<b>N/A</b>	
Number of countries with strengthened National System of Innovation as a result of CTCN support	<b>1</b>	
Number of organizations engaged through CTCN support	<b>~12</b>	<i>Central government Customs department Private producers NGO Research institutes</i>
<b>Insert any additional indicators here</b>		

## B. Core impact indicators

Please fill in the tables for anticipated impacts of the CTCN assistance. Every technical assistance should contribute to at least one of the indicators below. For guidance on how to report on core indicators see the [‘M&E Guidance Document for TA Implementers’](#).

Core indicator 1	Anticipated metric tons of CO <sub>2</sub> equivalent (CO <sub>2</sub> e) emissions reduced or avoided as a result of CTCN TA	
	Anticipated metric tons of CO <sub>2</sub> , equivalent emissions reduced or avoided as a result of the TA <b>on annual basis</b>	Anticipated metric tons of CO <sub>2</sub> , equivalent emissions reduced or avoided as a result of the TA <b>in total</b>
Quantitative value	130,000 by 2040 if implemented in 2024	Over 2,000,000 if implemented in 2024.
Unit	Tons of CO <sub>2</sub> e	Tons of CO <sub>2</sub> e
<p><b>Methodology</b></p> <p>Explain the method or process of verifying the indicator and how data was gathered</p>	<p>A market study was carried out which included:</p> <ul style="list-style-type: none"> <li>• projections of the stock and sales</li> <li>• Baseline performance was assessed.</li> <li>• Assumed improved performance of units was employed based on the proposed MEPS.</li> </ul> <p>A stock and flow model was used based on the information above to make estimations.</p> <p>For more detail consult the market studies.</p>	<p>The cumulative emissions were estimated by adding the annual savings during the period.</p>
<p><b>GHG assessment boundary</b></p> <p>Identify expected post-TA activities, associated effects and assess boundary for quantification of GHG emission reductions</p>	<p>Post TA activities fall on the side of Lebanese authorities looking to implement and enforce de activities designed during the TA.</p> <p>The quantification of emissions can proceed following up methodology used in the market study from the time of the implementation and enforcement of the MEPS.</p>	
<p><b>Baseline candidates</b></p> <p>Define alternative technologies or practises used in baseline calculation to represent possible alternatives to the project activities</p>	<p>Existing stock as per the product surveys. This is generally poor performing stock as it is usually low-quality imports from China.</p>	
<p><b>Baseline emissions</b></p> <p>Describe baseline scenario and emissions calculated</p>	<p>As per the methodology described above. A stock and flow model was used to determine market dynamics while unit performance was determined by data collected from the market and averaged for capacity levels.</p>	
<p><b>Assumptions</b></p> <p>Describe assumptions made during calculation and</p>	<p>Assumptions were made for:</p> <ul style="list-style-type: none"> <li>• GDP growth</li> <li>• Population growth</li> </ul>	

quantification of GHG reductions	<ul style="list-style-type: none"> <li>General enforcement of the MEPS and labels and their projections.</li> </ul>	
----------------------------------	---	--

<b>Core indicator 2</b>	<b>Anticipated increased economic, health, well-being, infrastructure and built environment, and ecosystems resilience to climate change impacts as a result of technical assistance</b>	
	<i>Please provide a <b>qualitative</b> description of the anticipated impacts on the categories below</i>	
<b>Infrastructure and built environment</b> Anticipated increased infrastructure resilience (avoided/mitigated climate induced damages and strengthened physical assets)	Implementation of MEPS also tends to result in the integration of higher quality equipment (not just lower cost) resulting in improvements to the resilience and stability of infrastructure.	
<b>Ecosystems and biodiversity</b> Anticipated increased ecosystem resilience (areas with increased resistance to climate-induced disturbances and with improved recovery rates)		
<b>Economic</b> Anticipated increased economic resilience (e.g. less reliance on vulnerable economic sectors or diversification of livelihood)	<b>Improved economics for energy consumers as their energy bills are lower due lower energy demand by appliances.</b> <b>Reduced demand from HH consumers support an improved performance of the energy systems enable it to reach a greater proportion of the populations.</b>	
<b>Health and wellbeing</b> Anticipated increased health and wellbeing of target group (e.g. improved basic health, water and food security)		

<b>Core indicator 3</b>	<b>Anticipated number of direct and indirect beneficiaries as a result of the TA</b>		
	<b>Direct beneficiaries</b>	<b>Indirect beneficiaries</b>	<b>Means of verification</b>
Adaptation related			<i>Describe calculation methods and assumptions made</i>
Mitigation related			<i>Describe calculation methods and assumptions made</i>
Both adaptation-and mitigation related			<i>Describe calculation methods and assumptions made</i>

<b>Core indicator 4</b>	<b>Amount of funding/investment leveraged (USD) as a result of TA (disaggregated by public, private, national, and international sources, as well as between anticipated/confirmed funding)</b>
-------------------------	---

	<b>Quantitative value</b> Value and currency	<b>Qualitative description</b> List the various elements corresponding to the quantitative value as well as expected timelines and responsible institutions	<b>Methods</b> Describe method use for quantification of funds leveraged including assumptions made and attention paid to causality, attribution and avoidance of double-counting
<b>Total</b> anticipated amount of funding/investment mobilised or leveraged (USD) as a result of the TA			
Anticipated amount of <b>public funding</b> mobilised from <b>national sources</b> (USD)			
Anticipated amount of <b>public funding</b> mobilised from <b>international and regional sources</b> as a result of the TA			
Anticipated amount of <b>private investment</b> mobilised (in USD) from <b>national sources</b> as a result of the TA			
Anticipated amount of <b>private investment</b> mobilised (in USD) from <b>international and regional sources</b> as a result of the TA			

## **Annex 2 (for internal use – to be filled in by the CTCN)**

### **CTCN evaluation**

This section will be completed by the relevant CTCN Technology Manager.

- Evaluation of the timeliness of the TA implementation as measured against the timeline included in the response plan;
- Evaluation of TA quality as defined in the response plan;
- Overall performance of the Implementers;
- Overall engagement of the NDE and Proponent;
- Lessons learned on the CTCN process and steps taken by the CTCN to improve.

